



+44 (0)1706 649217



+44 (0)1706 655512



[www.dunphy.co.uk](http://www.dunphy.co.uk)

## DATA SHEET

**Model: TLO5**

Revision Date: September 2015

**Output: 160-1100 kW**

Document Number: DS.TL05.06

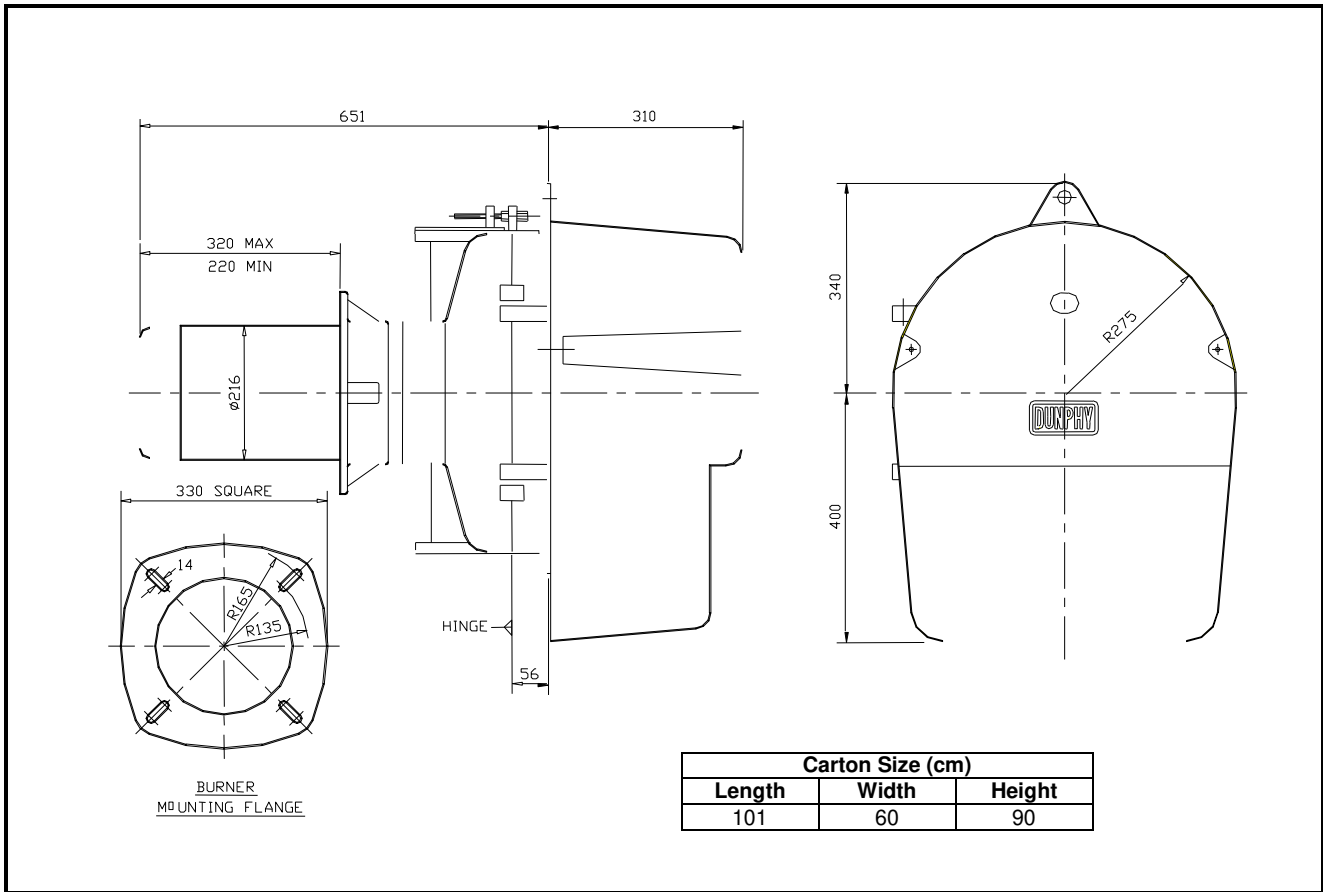


- ◆ All models approved to current British and European Standards.
- ◆ All models tested to European Standard EN267 - 'Methods of test for Atomising Oil Burners of Monobloc Type'.
- ◆ Baumuster number for TL05 Series burners is ??.
- ◆ All burners in the T.O. range are of the fan assisted, nozzle mix type and operation is fully automatic expanding flame start.
- ◆ Air inlet is suitable for connection to a ducted fresh air supply.
- ◆ Suitable for operation on light distillate oil up to 5.0 cSt at 40°C (Class D).



FM 24868

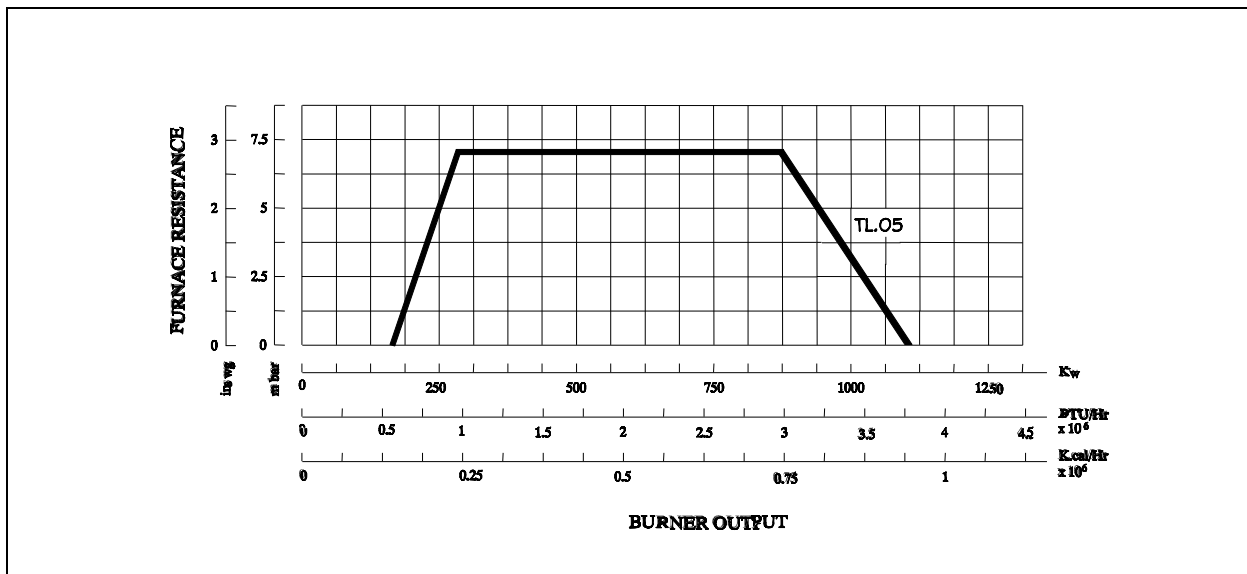
## BURNER DIMENSIONS



\*\* The burner gas train may be positioned as shown or rotated to the left or right as required.

- ◆ All dimensions in mm unless otherwise stated.
- ◆ Please check the issue number to ensure validity.

## BURNER RATING GRAPH



## SPECIFICATION DATA

BURNER TYPE	Firing Rate kW		Burner Control	FCAD*	Control Input Type	Litres / Hour	Voltage	Hz	Ph	Motor kW	Running Current	Starting Current	Weight	Order Code
	MIN	MAX												
TL05.100HL	160	1100	High / Low	Yes			220-240	50	1	1.1	3.0 Amp	13.6 Amp	86kg	

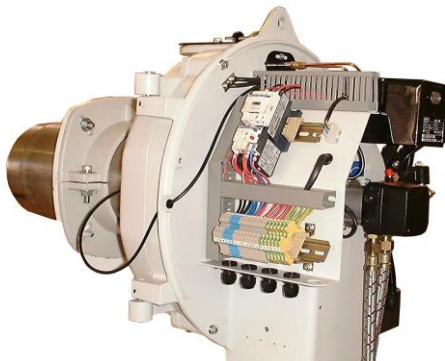
\*FCAD – Fully Closing Air Damper

## Features

- High Efficiency
- Adjustable burner mounting flange for different furnace projections
- Low noise operation
- Ease of maintenance and servicing through hinged body design offering immediate access to fan and combustion assembly
- Standard 7 pin and 4 pin wiring connections to burner



- Flame surveillance by means of a photocell.
- Simple commissioning with combustion head adjustment
- Fully closing electric air damper on burner shutdown eliminating boiler cooling due to chimney buoyancy
- Twin nozzle system for high / low configuration



Dunphy Combustion Ltd. have a policy of continuous development and reserve the right to change specifications without prior notice