



+44 (0)1706 649217



+44 (0)1706 655512



www.dunphy.co.uk

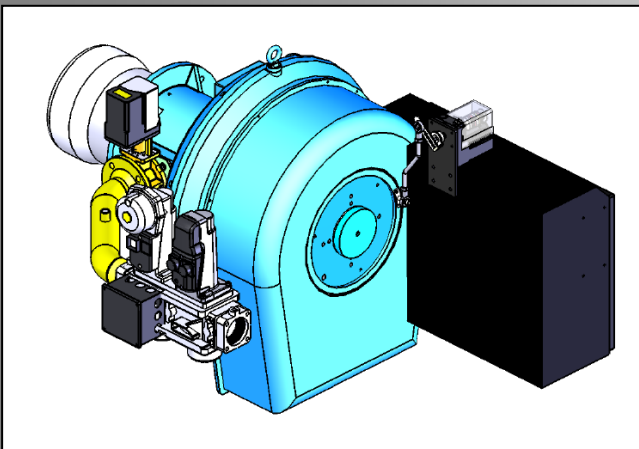
DATA SHEET

Model: TG2

Revision Date: November 2019

Output: 100 – 1550 kW

Revision Number: DS.TG2.19



- ◆ All models approved to current British and European Standards.
- ◆ All burners in the T.G. range are of the fan assisted, nozzle mix type and operation is fully automatic.
- ◆ All models have been independently tested to the European Standard BS EN 676 'Automatic forced draught burners for gaseous fuels.' (Natural Gas, LPG, Biogas, Hydrogen & Waste Gases ETC)
- ◆ CE approval numbers for the TG2 Series burners are:
 - ◆ TG2.100/115/155 – CE 679311



FM 24868

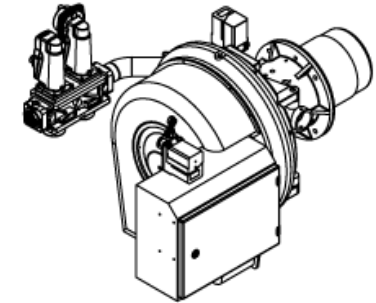
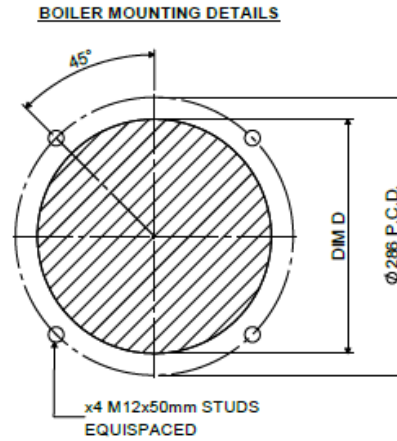
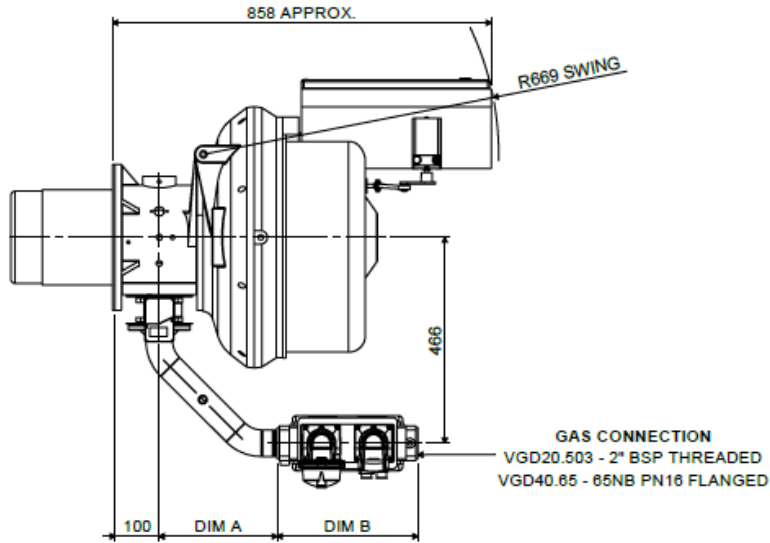
BURNER DIMENSIONS

Drawings shown on the following pages.

All dimensions in mm unless otherwise stated.

- ◆ The minimum standard dimension for 'PROJ' is 230mm. However, it can be varied to suit application. Requirements should be stated when unit is ordered.
- ◆ Dimension 'E' is the average swing radius; this can vary on non-standard burners.
- ◆ Please check the issue number to ensure validity.

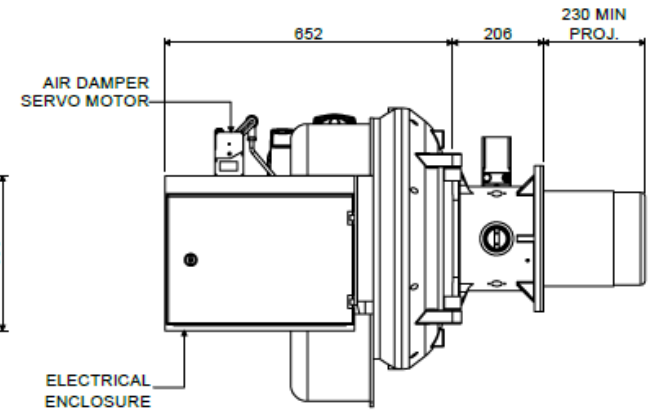
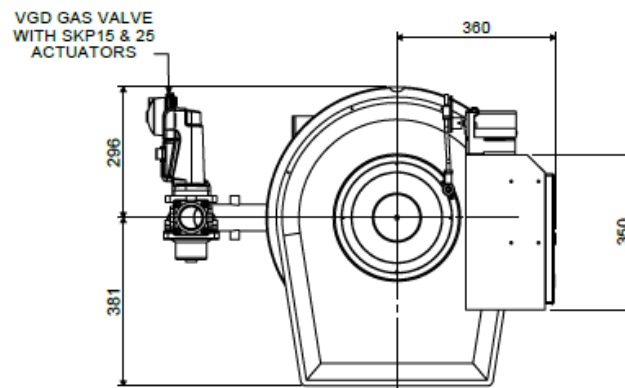
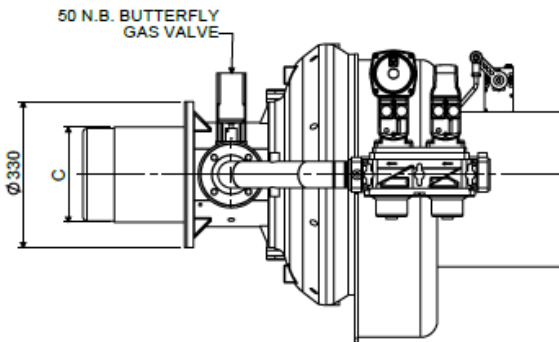
ELECTRONIC MODULATION – RHH WITH VGD GAS VALVE



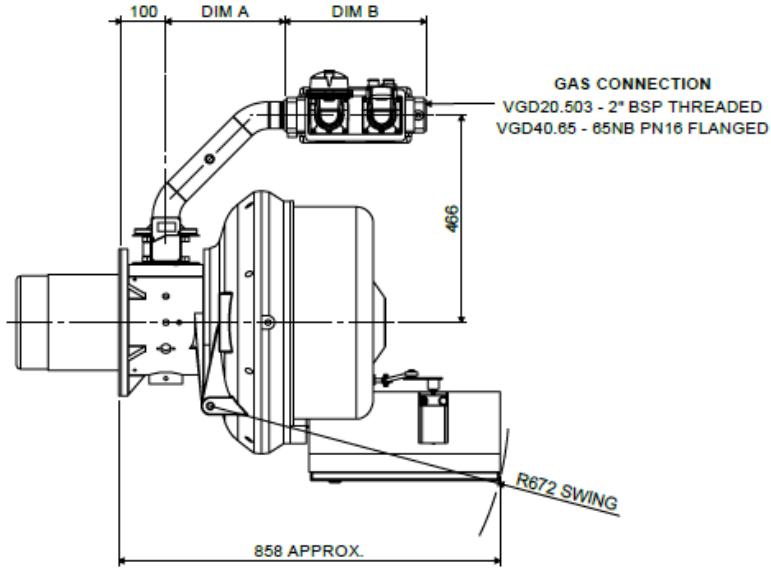
NOTE: BURNER SHOWN WITH
VGD GAS TRAIN

VGD SIZE	DIM. A	DIM. B
VGD20.503	273	319
VGD40.65	388	290

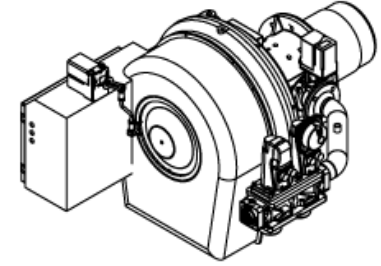
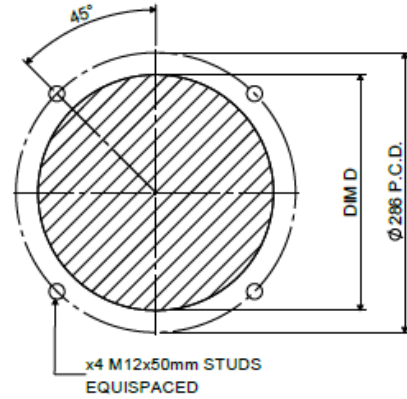
BURNER TYPE	DIM. C	DIM. D
TG2.100 Z	Ø216	Ø223
TG2.115 Z	Ø216	Ø223
TG2.155 Y	Ø235	Ø250



ELECTRONIC MODULATION – LHH WITH VGD GAS VALVE



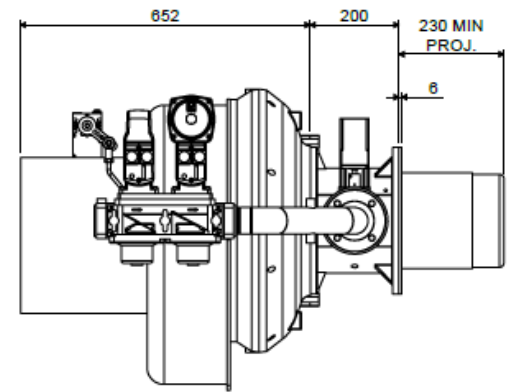
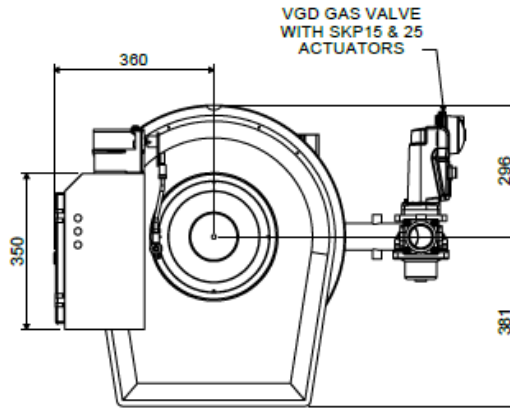
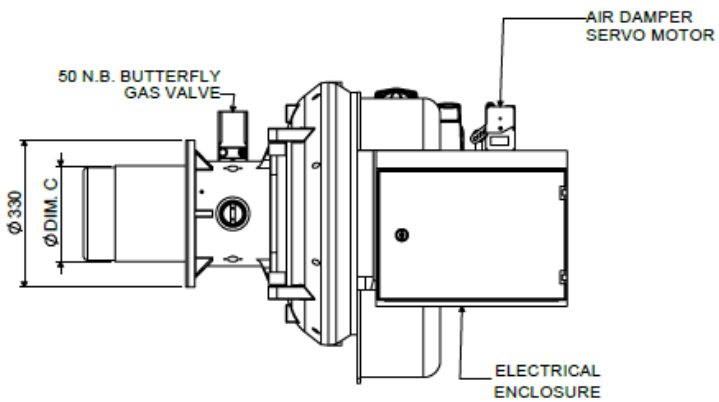
BOILER MOUNTING DETAILS



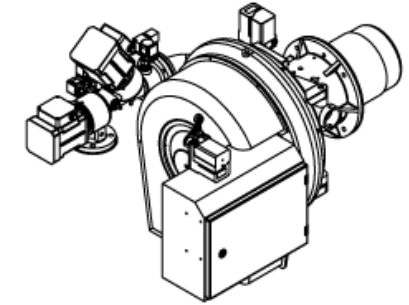
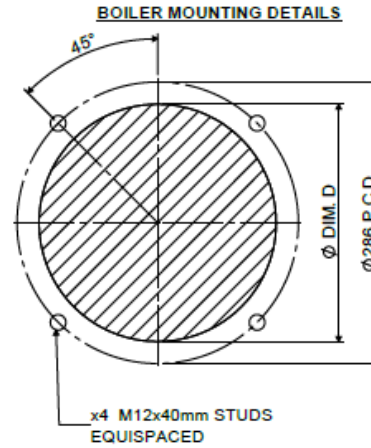
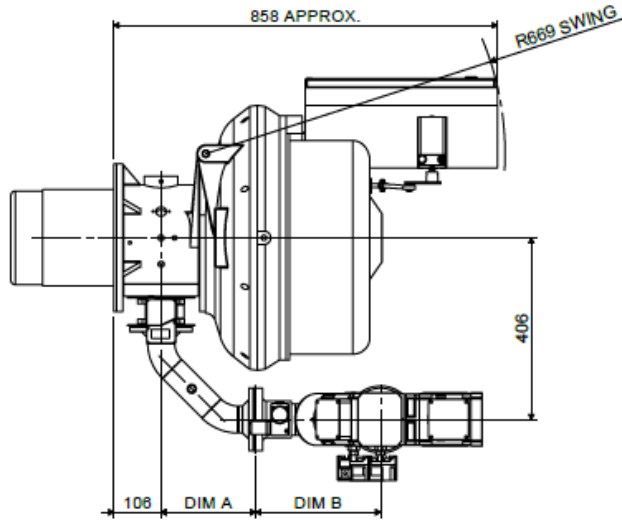
NOTE: BURNER SHOWN WITH VGD GAS TRAIN

VGD SIZE	DIM. A	DIM. B
VGD20.503	273	319
VGD40.85	368	290

BURNER TYPE	DIM. C	DIM. D
TG2.100 Z	Ø216	Ø223
TG2.115 Z	Ø216	Ø223
TG2.155 Y	Ø235	Ø250



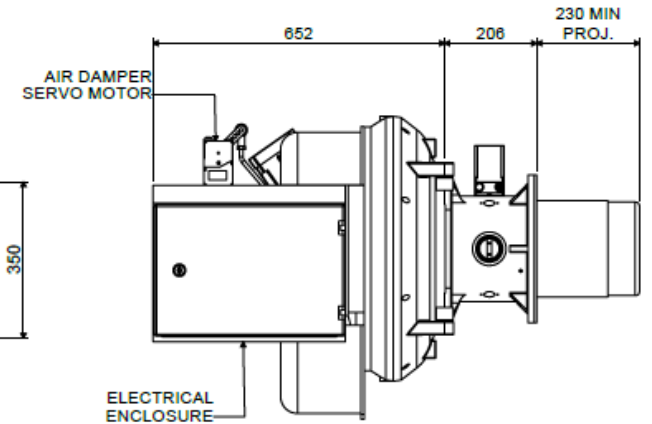
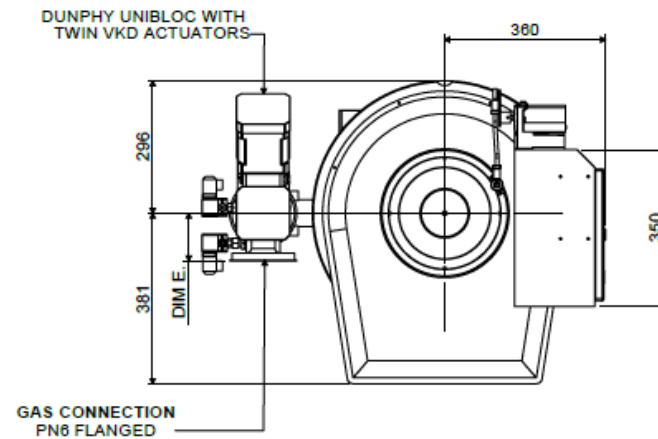
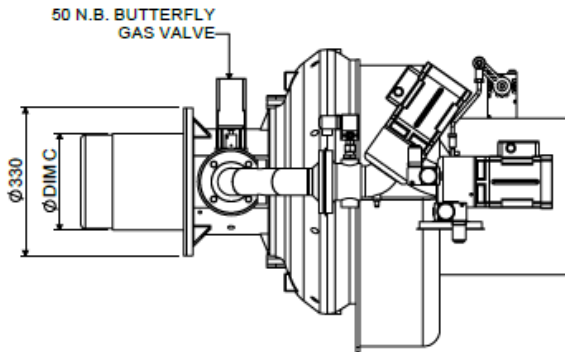
ELECTRONIC MODULATION – RHH WITH UNIBLOC GAS VALVE



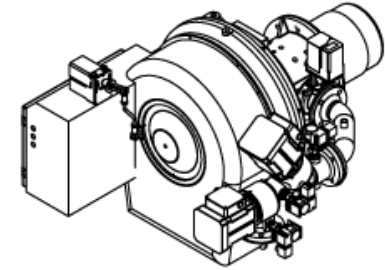
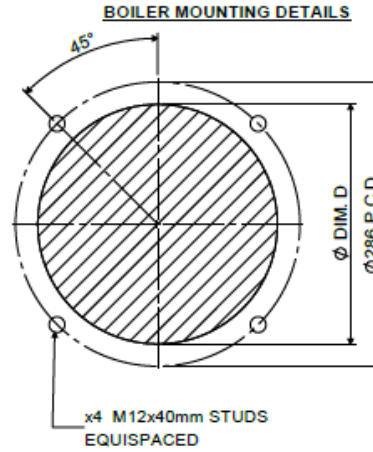
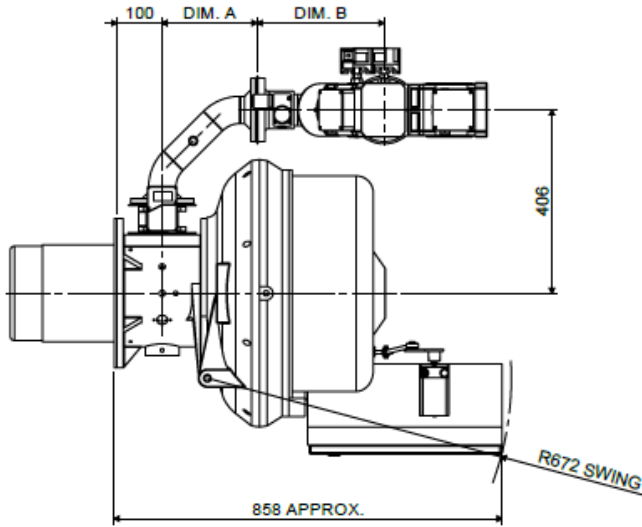
NOTE: BURNER SHOWN WITH UNIBLOC GAS TRAIN

UNIBLOC SIZE	DIM.A	DIM.B	DIM.E
DN50	211	279	108
DN65	300	292	122

BURNER TYPE	DIM. C	DIM. D
TG2.100 Z	Ø218	Ø223
TG2.115 Z	Ø218	Ø223
TG2.155 Y	Ø235	Ø250



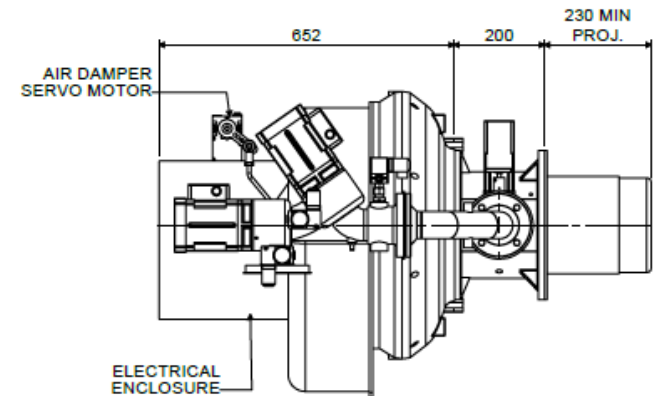
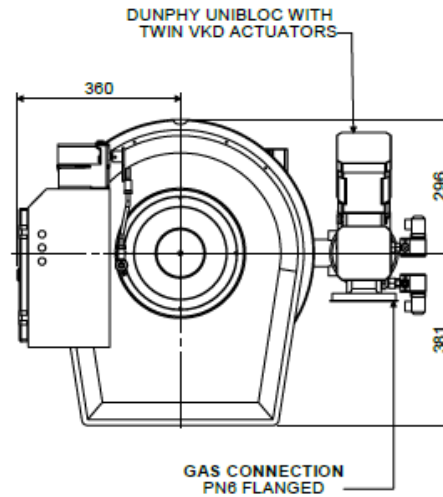
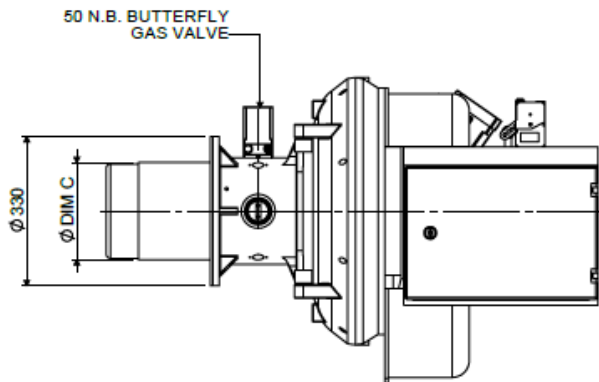
ELECTRONIC MODULATION – LHH WITH UNIBLOC GAS VALVE



NOTE: BURNER SHOWN WITH UNIBLOC GAS TRAIN

UNIBLOC SIZE	DIM.A	DIM.B	DIM.E
DN50	211	279	106
DN65	300	292	122

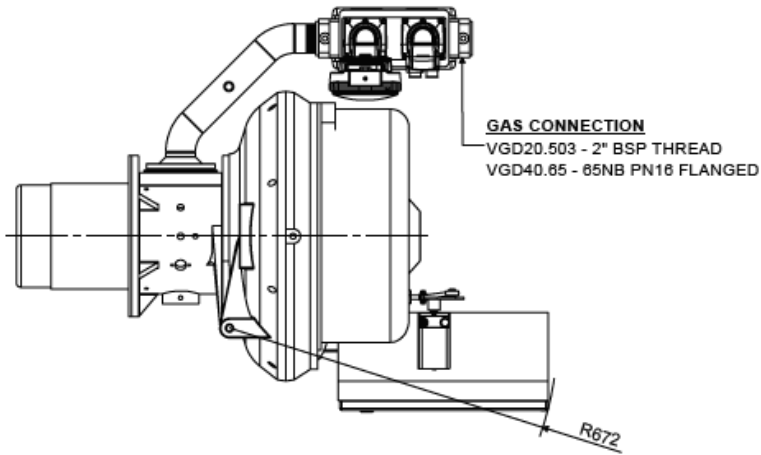
BURNER TYPE	DIM. C	DIM. D
TG2.100 Z	$\phi 218$	$\phi 223$
TG2.115 Z	$\phi 218$	$\phi 223$
TG2.155 Y	$\phi 235$	$\phi 250$



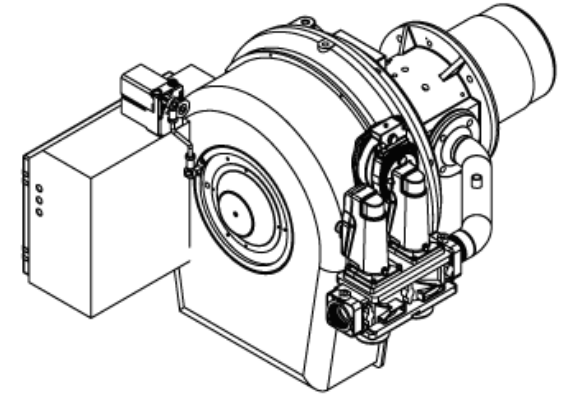
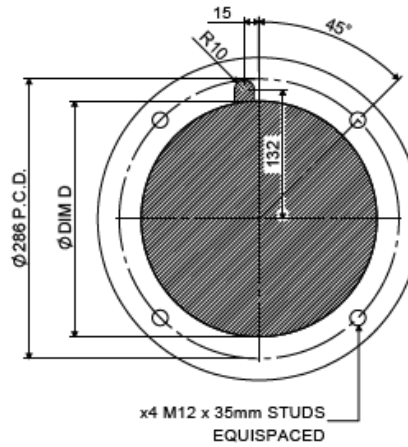
Approved

HIGH / LOW / PNEUMATIC MODULATION – LHH WITH VGD GAS VALVE

TG2 HIGH/LOW LHH BURNER

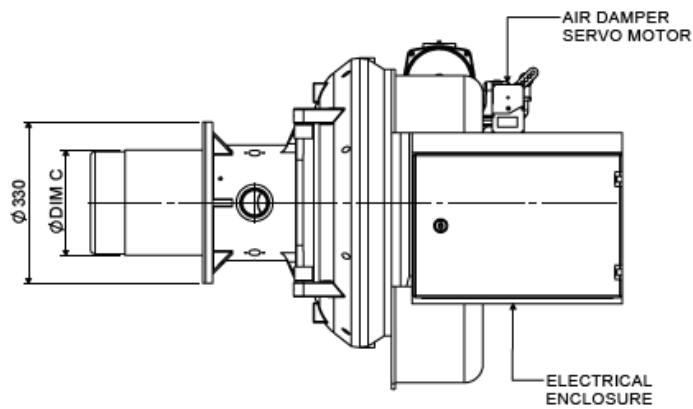


BOILER MOUNTING DETAILS FOR LHH BURNER WITH FURNACE PULSE PIPE

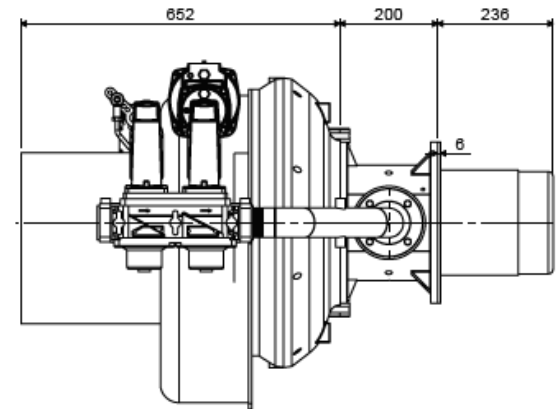
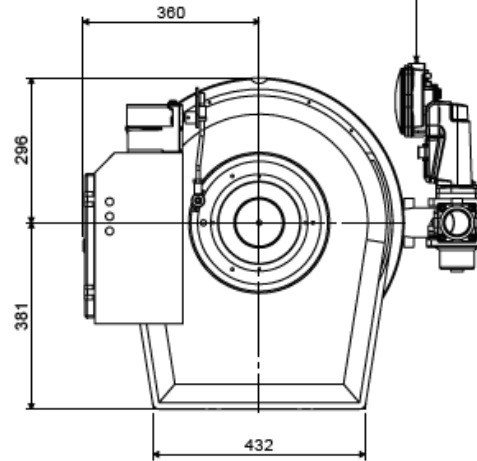


BURNER TYPE	DIM. C	DIM. D
TG2.100 Z	Ø218	Ø223
TG2.115 Z	Ø218	Ø223
TG2.155 Y	Ø235	Ø250

GAS VALVE	DIM. A	DIM. B
VGD20.503	273	319
VGD40.65	366	290

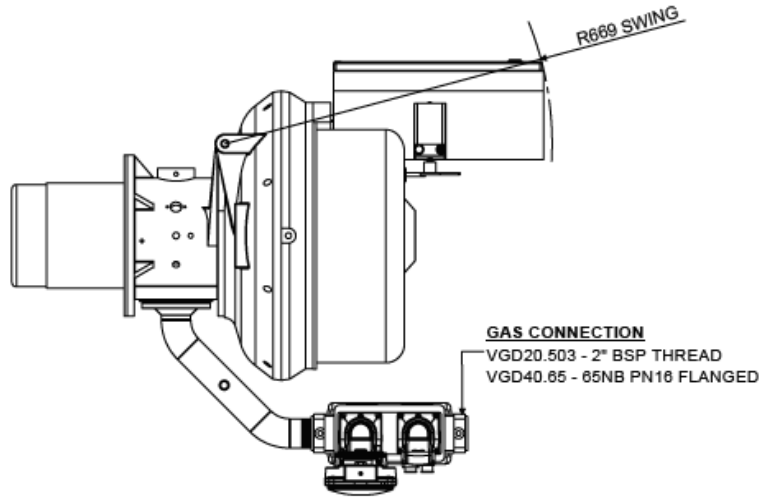


SIEMENS VGD GAS VALVE WITH SKP 15 & 75 ACTUATORS

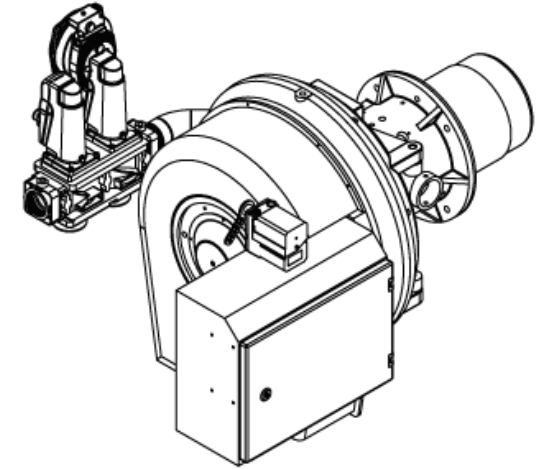
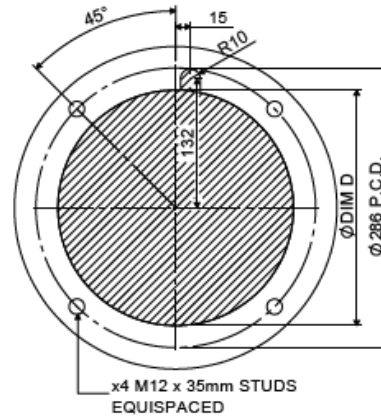


HIGH / LOW / PNEUMATIC MODULATION – RHH WITH VGD GAS VALVE

TG2 HIGH/LOW RHH BURNER

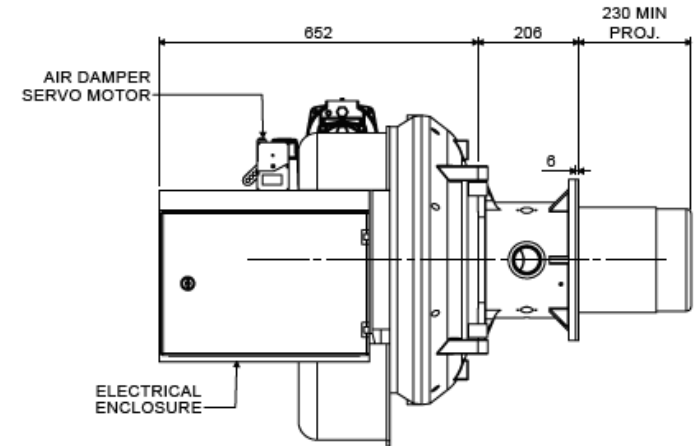
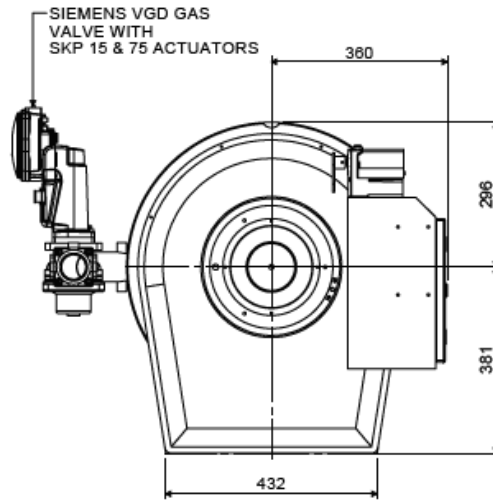
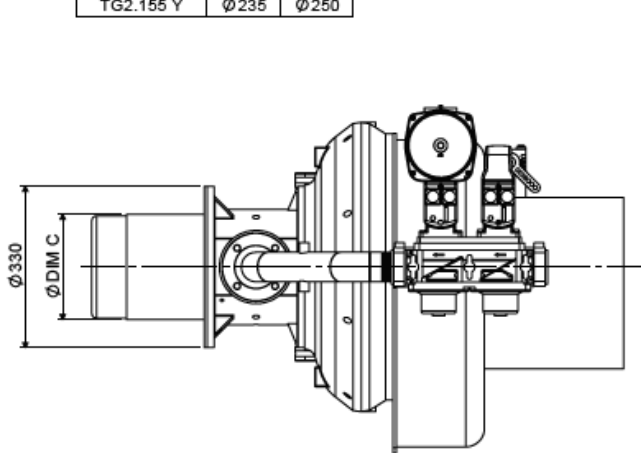


BOILER MOUNTING DETAILS FOR RHH BURNER WITH FURNACE PULSE PIPE

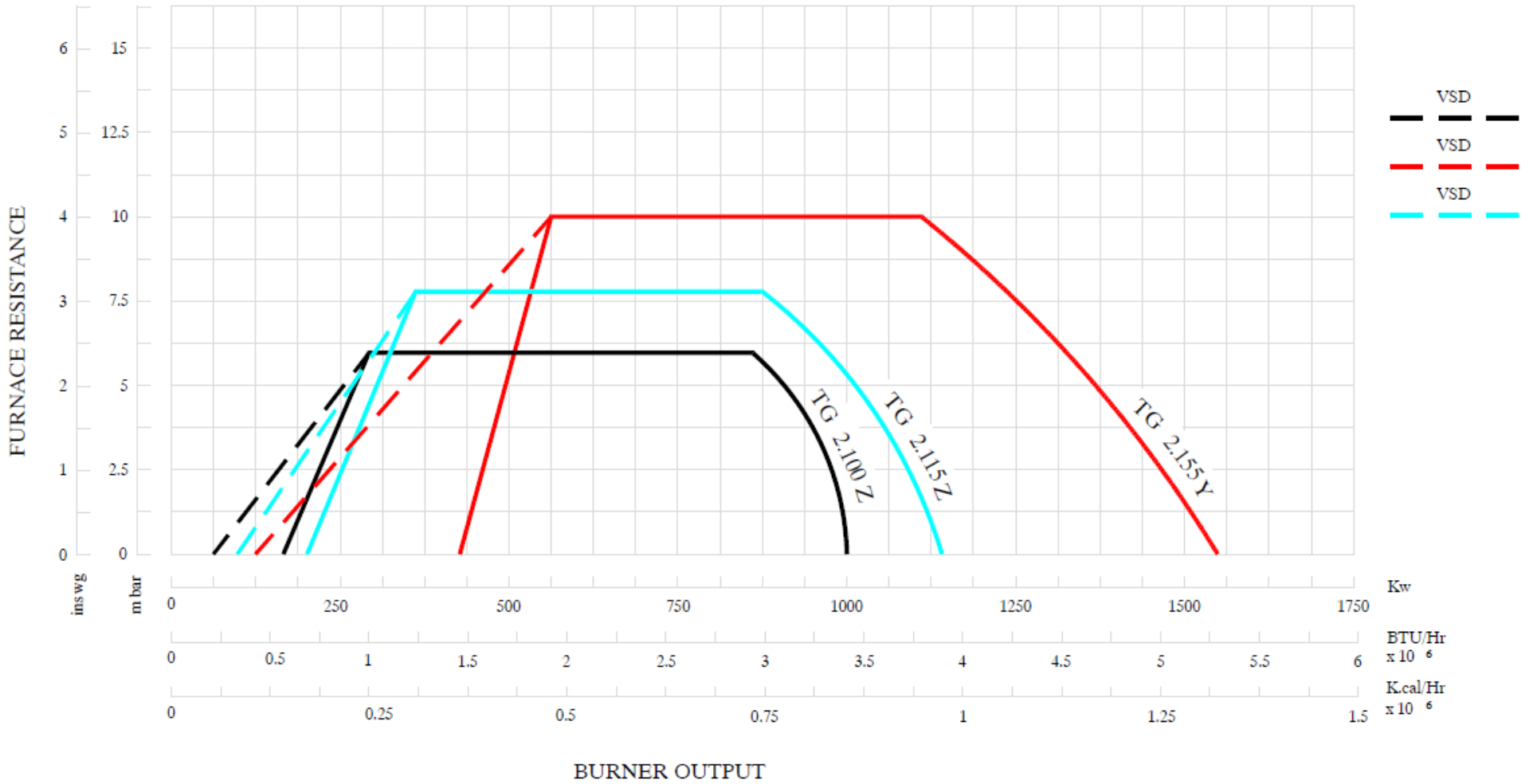


BURNER TYPE	DIM. C	DIM. D
TG2.100 Z	Ø216	Ø223
TG2.115 Z	Ø216	Ø223
TG2.155 Y	Ø235	Ø250

GAS VALVE	DIM. A	DIM. B
VGD20.503	273	319
VGD40.65	366	290

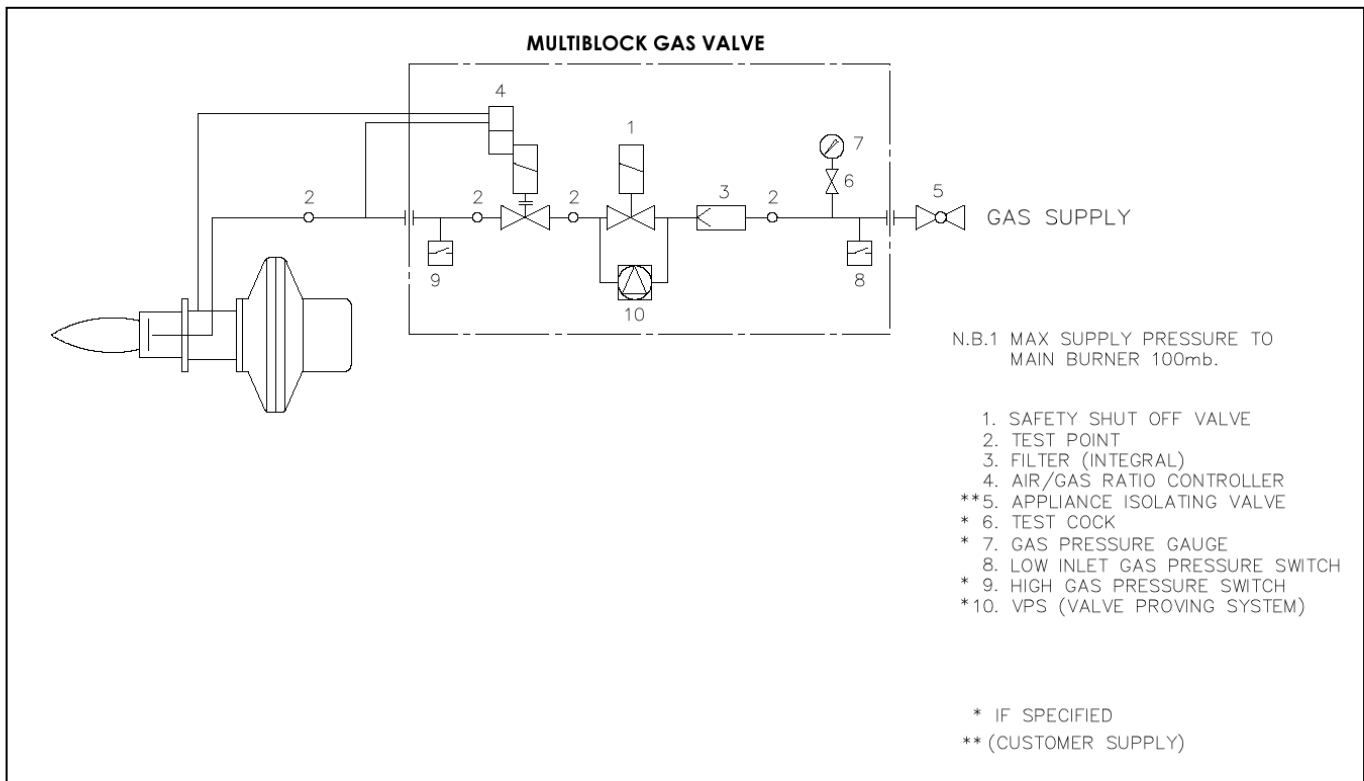


BURNER RATING GRAPH

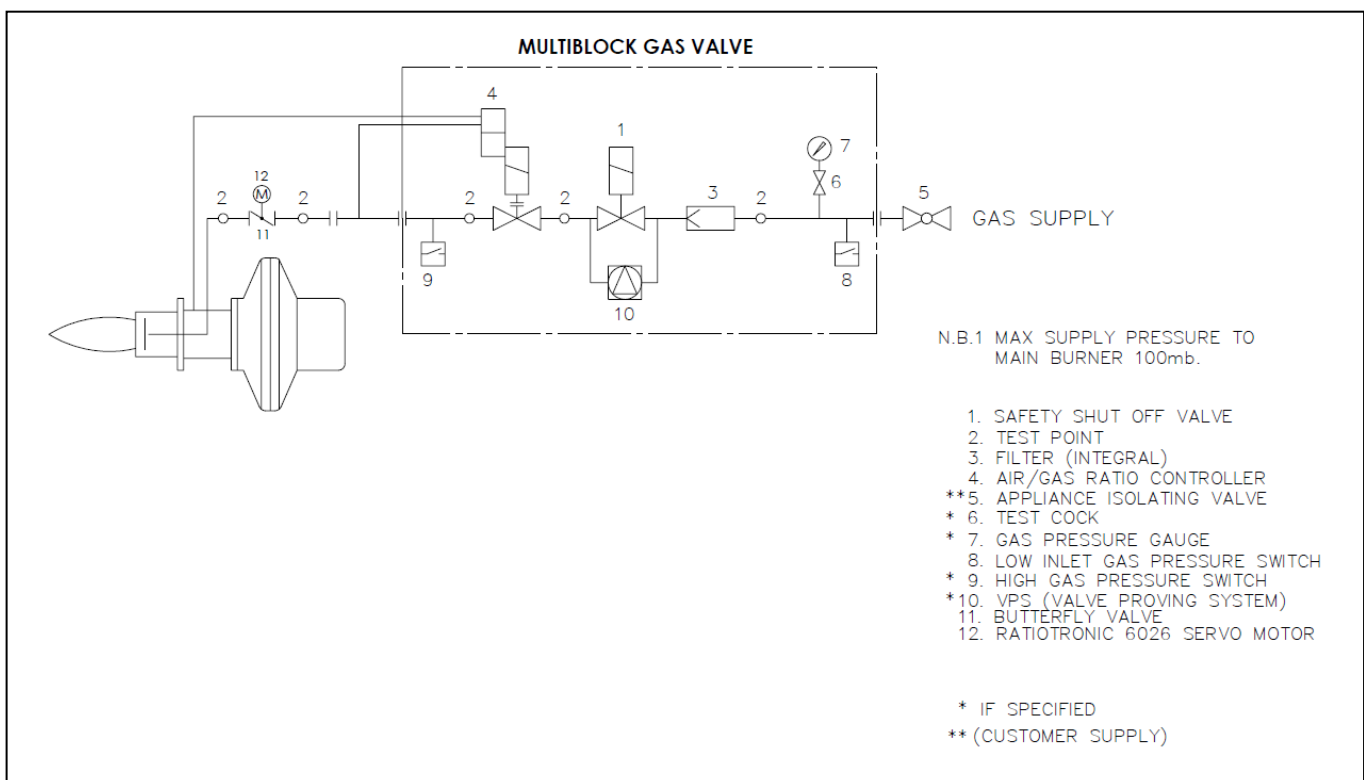


BURNER SCHEMATICS

Typical Gas Line Schematic for High / Low & Pneumatic Modulating Burners without Gas Pilot Line



Typical Gas Line Schematic for TG2 Electronic Modulating Burners



STANDARD SPECIFICATION DATA

BURNER TYPE	Firing Rate kW		GAS VOLUME (m3/HR) *1		FIRING MODE OPTIONS				Motor kW	Voltage	Hz	Ph	Running Current (Amp)	Starting Current (Amp) *4
	MIN *3	MAX	MIN *3	MAX	High / Low	Electro / Pneumatic Modulation	Electronic Modulation*2	Electronic Modulation with VSD						
TG2.100Z	100	1000	9.2	92	✓	✓	✓	✓	1.1	380-420	50	3	5	9
TG2.115Z	115	1150	10.6	106	✓	✓	✓	✓	1.5	380-420	50	3	6.5	11
TG2.155Y	155	1550	14.3	143	✓	✓	✓	✓	2.2	380-420	50	3	7.5	16

*1 – Based on Nat. Gas C.V 10.84 kWh/m3

*2 - Fitted with a Ratiotronic 6000 system

*3 – Based on 10:1 turn down fitted with VSD

*4 – When fitted with VSD the starting current is 0 Amps

COMBUSTION HEAD

The Dunphy combustion head incorporates a two-stage fuel/air mixing system which eliminates low frequency resonance and allows maximum combustion efficiency with minimum emission levels.

This system combined with smooth ignition and extreme reliability makes Dunphy combustion equipment the most sensible choice for all heating and process applications.

ULTRA LOW NOx BURNERS

All Dunphy T-Series burners are fitted with low NOx combustion heads as standard equipment.

As an optional extra all burners in this range can be fitted with a flue gas recirculation system to achieve ultra low NOx emissions.

Dunphy Combustion Ltd has a policy of continuous development and reserve the right to change prices and specifications without prior notice.

Dunphy Combustion Ltd. has a policy of continuous development and reserve the right to change prices and specifications without prior notice