

DUNPHY

DUNPHY COMBUSTION LTD.

 Queensway
 Rochdale
 England
 OL11 2SL


+44 (0)1706 649217



+44 (0)1706 655512


www.dunphy.co.uk

DATA SHEET

Model: TG03 - LMV

Revision Date: October 2015

Output: 70 – 410 kW

Revision Number: DS.TG03-LMV.01

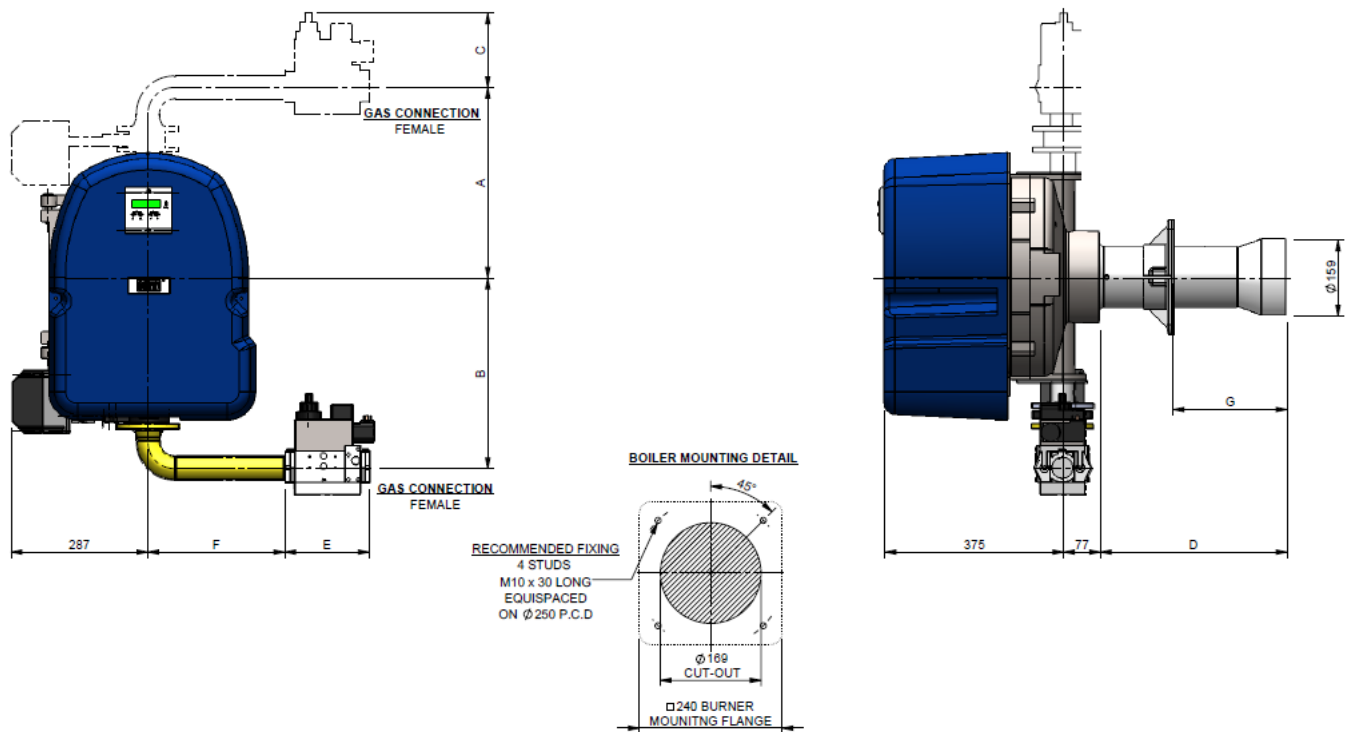


- ◆ All models approved to current British and European Standards.
- ◆ All models have been independently tested to the European Standard BS EN676' Automatic forced draught burners for gaseous fuels'.
- ◆ CE number for TG03 series burners is CE 86/AQ/263.
- ◆ All burners in the T.O. range are of the fan assisted, nozzle mix type and operation is fully automatic expanding flame start.
- ◆ Air inlet is suitable for connection to a ducted fresh air supply.
- ◆ **Natural Gas** - Minimum gas pressure of 20mb required at burner inlet.
- ◆ **L.P.G.**
- ◆ **Town Gas**
- ◆ **Biogas**



FM 24868

BURNER DIMENSIONS

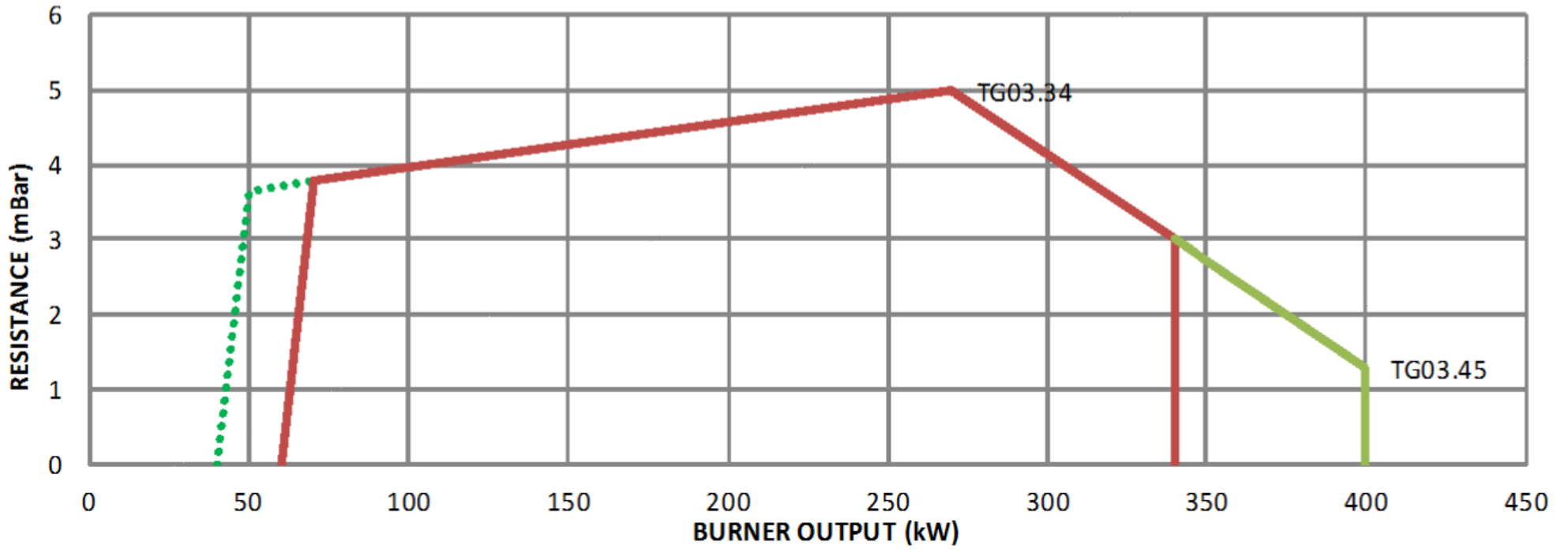


Burner Model	Gas Entry Position	Dim A	Dim B	Dim D	Dim G
TG03.34 MP (LMV 27)	Top	400	300	390-455	110-310
	Bottom	260	400		
TG03.34 MP-SC (LMV 37)	Top	400	300	390-455	110-310
	Bottom	260	400		
TG03.45 MP (LMV 27)	Top	400	300	390-455	110-310
	Bottom	260	400		
TG03.45 MP-SC (LMV 37)	Top	400	300	390-455	110-310
	Bottom	260	400		

Burner Model	Gas Pressure	Gas Valve	Connection Size	Dim C	Dim E	Dim F
TG03.34 MP (LMV 27)	≤ 20 mBar	Dungs MB-DLE 412	1.25" B.S.P.	160	185	287
	> 40 mBar	Dungs MB-DLE 407	0.75" B.S.P.	140	151	342
TG03.34 MP-SC (LMV 37)	≤ 20 mBar	Dungs MB-DLE 412	1.25" B.S.P.	160	185	287
	> 40 mBar	Dungs MB-DLE 407	0.75" B.S.P.	140	151	342
TG03.45 MP (LMV 27)	≤ 20 mBar	Dungs MB-DLE 415	1.25" B.S.P.	170	256	287
	> 40 mBar	Dungs MB-DLE 410	1.25" B.S.P.	160	185	287
TG03.45 MP-SC (LMV 37)	≤ 20 mBar	Dungs MB-DLE 415	1.25" B.S.P.	170	256	287
	> 40 mBar	Dungs MB-DLE 410	1.25" B.S.P.	160	185	287

- ◆ All dimensions in mm unless otherwise stated.
- ◆ Please check the issue number to ensure validity.
- ◆ The burner gas train may be either top or bottom entry.
- ◆ The burner gas train may be positioned as shown or rotated to the left or right as required

BURNER RATING GRAPH



SPECIFICATION DATA

BURNER MODEL	Firing Rate kW		Burner Controller	Gas Valve				Max Gas Pressure mbar	m ³ /Hour ^{*(1)}	Voltage	Hz	Ph ^{*(2)}	Motor Watts	Running Current	Starting Current	Weight kg ^{*(3)}
	Min	Max		Inlet Pressure ≤ 20 mBar	Gas Connection Size	Inlet Pressure > 40 mBar	Gas Connection Size									
TG03.34 MP	70	340	LMV 27	MB-DLE 412	1.25" BSP	MB-DLE 407	0.75" BSP	100	33	220 - 240	50	1	550	3.5	14	44/52/11
TG03.34 MP-SC	35	340	LMV 37	MB-DLE 412	1.25" BSP	MB-DLE 407	0.75" BSP	100	33	220 - 240	50	1	550	3.5	3.5	47/55/11
TG03.45 MP	70	410	LMV 27	MB-DLE 415	1.25" BSP	MB-DLE 410	1.25" BSP	100	40	220 - 240	50	1	550	3.5	14	44/52/11
TG03.45 MP-SC	45	410	LMV 37	MB-DLE 415	1.25" BSP	MB-DLE 410	1.25" BSP	100	40	220 - 240	50	1	550	3.5	3.5	47/55/11

* (1) – Based on Nat. Gas C.U. 10.4kW/m

* (2) – Also available with 3ph fan motor

* (3) – A – Burner Without valve, B- Burner with valve, C – Packaging weight

Notes

1. All burners are quoted with burner control box
2. All burners are quoted with gas valves
3. All burners supplied with mounting flange gasket and fixing bolts
4. All burner types are supplied without temperature controller and boiler temperature sensor
5. All burner fitted with VSDs are also fitted with encoder feedback

FEATURES

Common Features

- High efficiency
- Low Noise operation
- Integrated low gas pressure protection switch
- Adjustable flange for different furnace projections
- All gas valves factory prepared ready for immediate and simple connection to burner.
- Electronic modulating gas valve.
- Fully closing air damper.



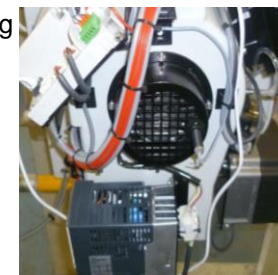
Temperature/Pressure Controller

- Optional Built-in controller
- Direct connection to temperature or pressure transducer for automatic burner modulation
- Digital read-out of actual temperature or



LMV 37 (MP-SC Variant)

- Built-in energy saving speed controller
- Very high turndown ratio ~ 10:1
- Ultra low noise operation
- Speed encoder



Dunphy Combustion Ltd. have a policy of continuous development and reserve the right to change specifications without prior notice