

DUNPHY

DUNPHY COMBUSTION LTD.

 Queensway
 Rochdale
 England
 OL11 2SL


+44 (0)1706 649217

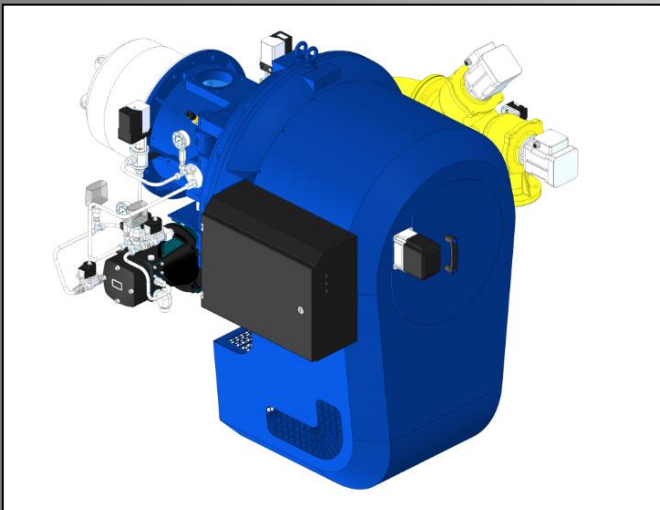


+44 (0)1706 655512



www.dunphy.co.uk

DATA SHEET

Model: TD5
Revision Date: October 2019
Output: 800 – 9800 kW
Revision Number: DS.TD5.18


- ◆ All models approved to current British and European Standards.
- ◆ All burners in the T.D. range are of the fan assisted, nozzle mix type and operation is fully automatic.
- ◆ CE approval numbers for the TD5 Series burners are:
 - ◆ TD5.800/1000 - CE 679311

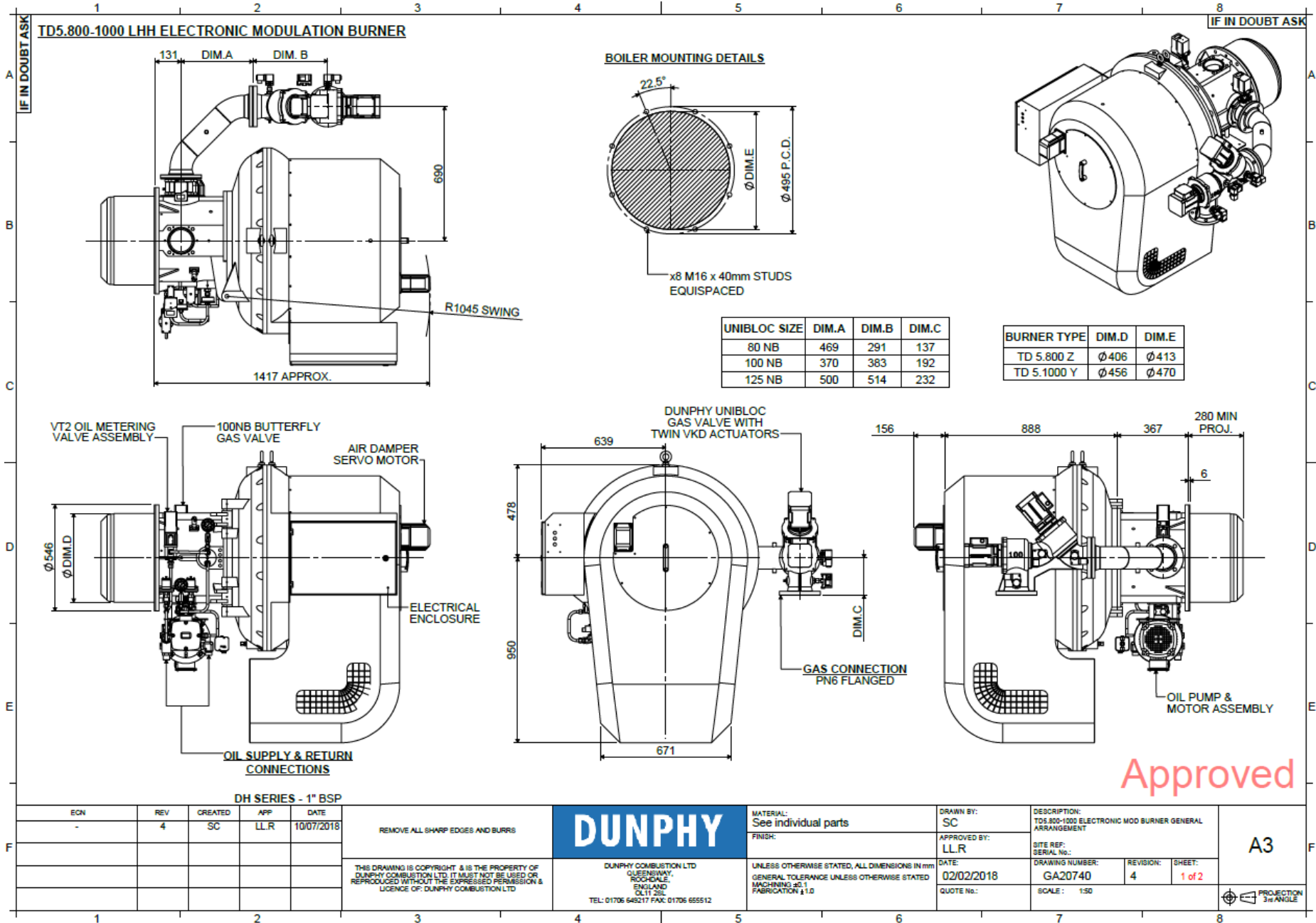


FM 24868

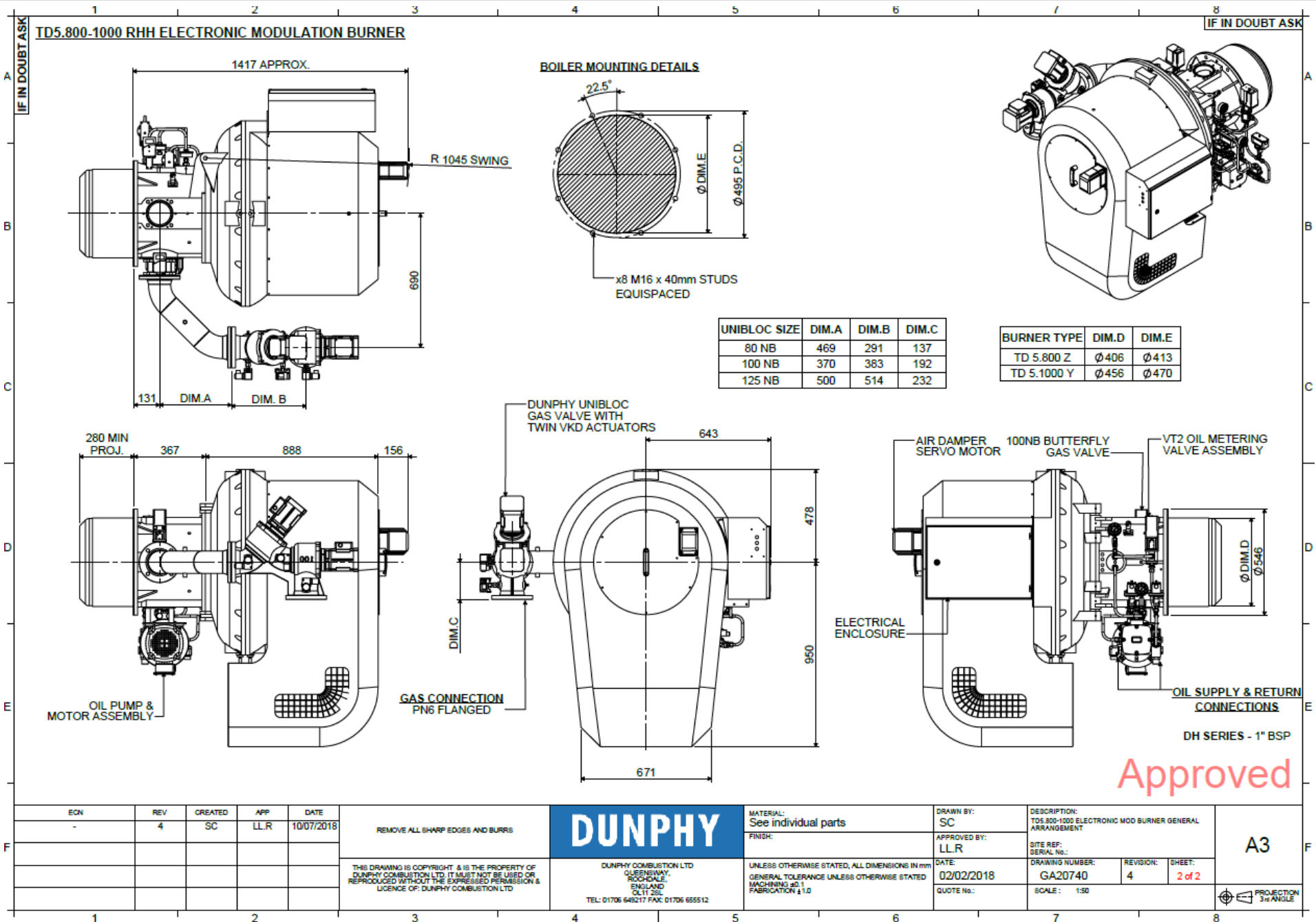
BURNER DIMENSIONS

- ◆ Drawings shown on the following pages
- ◆ All dimensions in mm unless otherwise stated.
- ◆ The minimum standard dimension for 'PROJ' is 280mm. However, it can be varied to suit application. Requirements should be stated when unit is ordered.
- ◆ The swing radius shown is the average; this can vary on non-standard burners.
- ◆ Burners supplied as Left hand hinge or Right hand hinge
- ◆ Please check the issue number to ensure validity.

TD5 LHH ELECTRONIC MODULATION



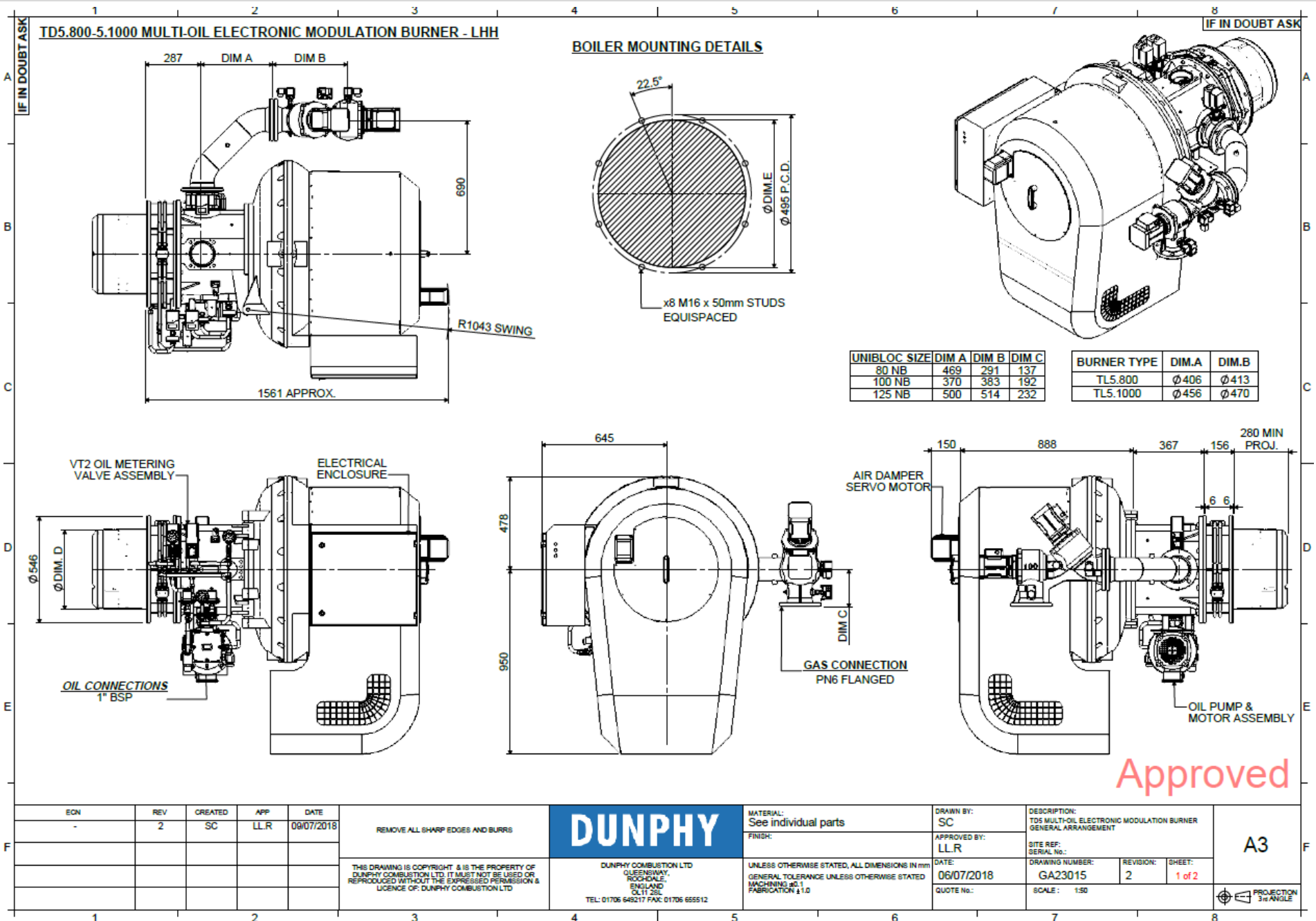
TD5 RHH ELECTRONIC MODULATION



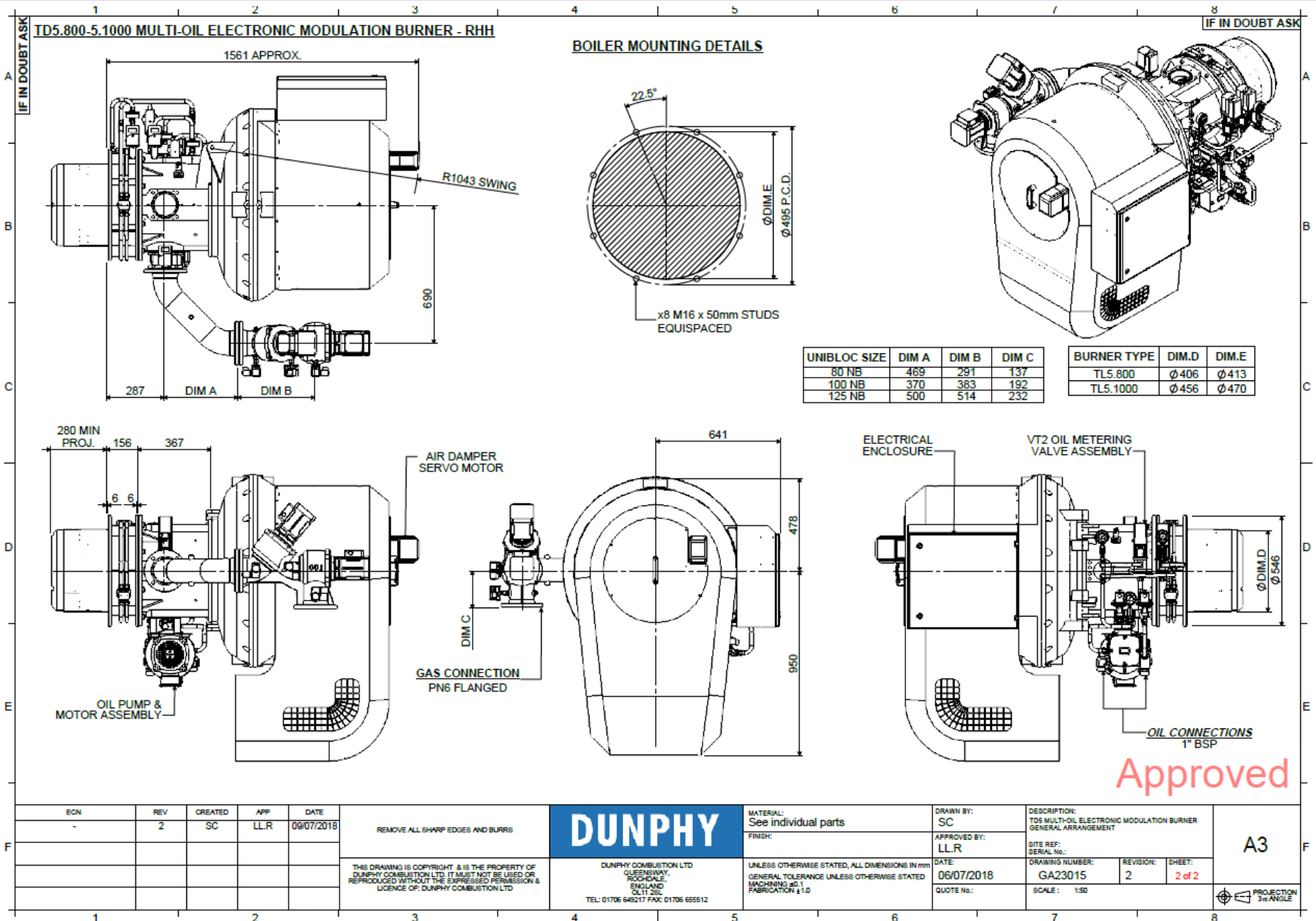
Approved

ECN	REV	CREATED	APP	DATE	REMOVE ALL SHARP EDGES AND BURRS	DUNPHY	MATERIAL:	DRAWN BY:	DESCRIPTION:	A3	
-	4	SC	LLR	10/07/2018			See individual parts	SC	TD5.800-1000 ELECTRONIC MOD BURNER GENERAL ARRANGEMENT		
THIS DRAWING IS COPYRIGHT & IS THE PROPERTY OF DUNPHY COMBUSTION LTD. IT MUST NOT BE USED OR REPRODUCED WITHOUT THE EXPRESSED PERMISSION & LICENCE OF DUNPHY COMBUSTION LTD						DUNPHY COMBUSTION LTD QUEENSWAY, ROCHDALE, ENGLAND OL11 2SL TEL: 01706 648217 FAX: 01706 655512	FINISH:	APPROVED BY:	SITE REF:	PROJECTION 3rd ANGLE	
						UNLESS OTHERWISE STATED, ALL DIMENSIONS IN mm GENERAL TOLERANCE UNLESS OTHERWISE STATED MACHINING ±0.1 FABRICATION ±1.0		LLR	GA20740		
								DATE:	DRAWING NUMBER:	REVISION:	SHEET:
								02/02/2018	GA20740	4	2 of 2
								QUOTE No.:	SCALE:		
									1:50		

TD5 LHH ELECTRONIC MODULATION WITH MULTI OIL



TD5 RHH ELECTRONIC MODULATION WITH MULTI OIL



UNIBLOC SIZE	DIM A	DIM B	DIM C
80 NB	469	291	137
100 NB	370	383	192
125 NB	500	514	232

BURNER TYPE	DIM.D	DIM.E
TL5.800	Ø406	Ø413
TL5.1000	Ø456	Ø470

Approved

EON	REV	CREATED	APP	DATE
-	2	SC	LLR	09/07/2018

REMOVE ALL SHARP EDGES AND BURRS

THIS DRAWING IS COPYRIGHT & IS THE PROPERTY OF DUNPHY COMBUSTION LTD. IT MUST NOT BE USED OR REPRODUCED WITHOUT THE EXPRESSED PERMISSION & LICENCE OF DUNPHY COMBUSTION LTD

DUNPHY

DUNPHY COMBUSTION LTD
 QUEENSWAY,
 ROCHEDALE,
 ENGLAND
 OL11 2SS
 TEL: 01706 645217 FAX: 01706 655512

MATERIAL: See individual parts

FINISH:

UNLESS OTHERWISE STATED, ALL DIMENSIONS IN mm

GENERAL TOLERANCE UNLESS OTHERWISE STATED
 MACHINING ±0.1
 FABRICATION ±1.0

DRAWN BY: SC

APPROVED BY: LLR

DATE: 06/07/2018

QUOTE No:

DESCRIPTION: TD5 MULTI-OIL ELECTRONIC MODULATION BURNER GENERAL ARRANGEMENT

SITE REF: SERIAL No:

DRAWING NUMBER: GA23015

REVISION: 2

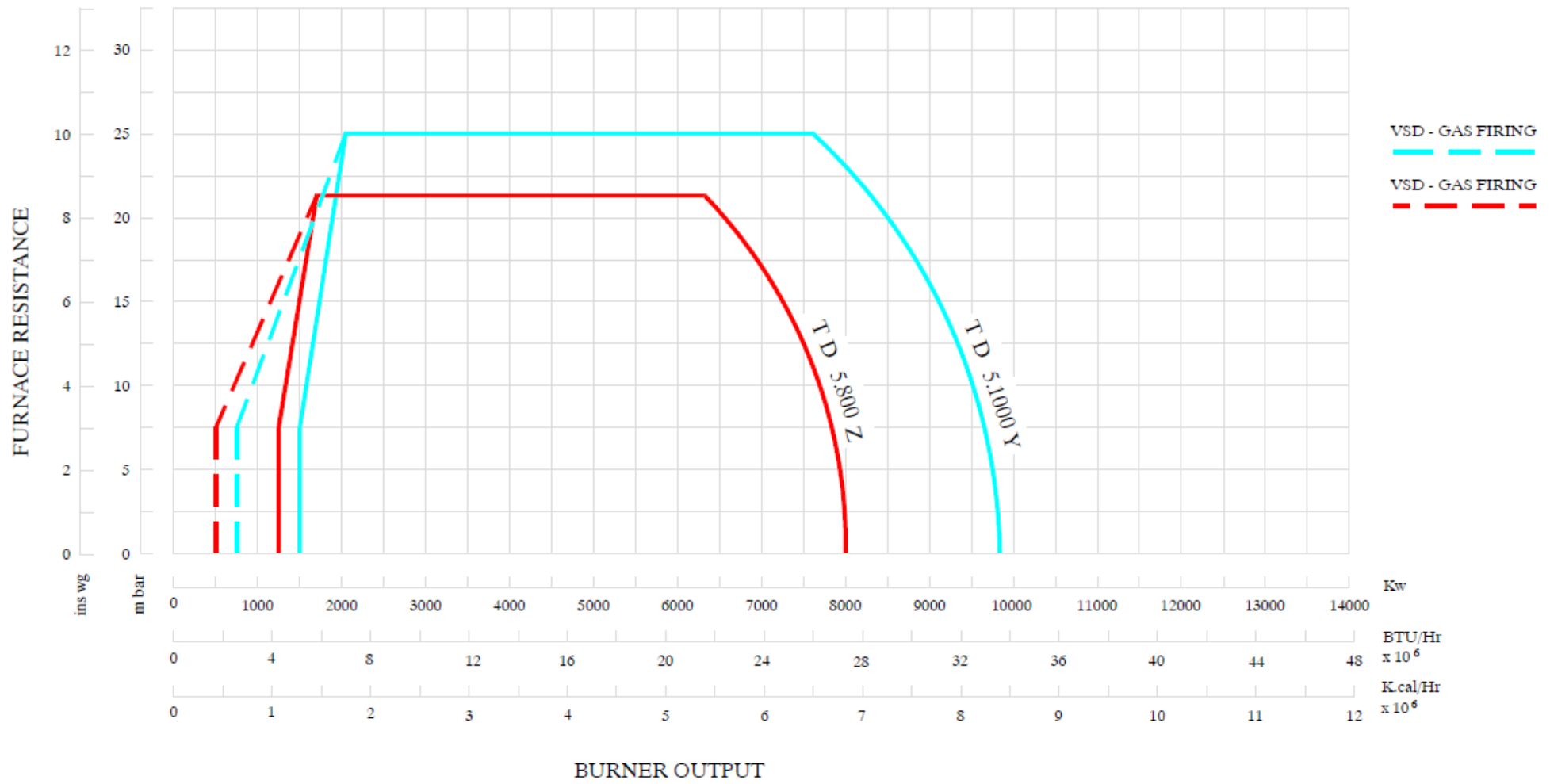
SHEET: 2 of 2

SCALE: 1:50

A3

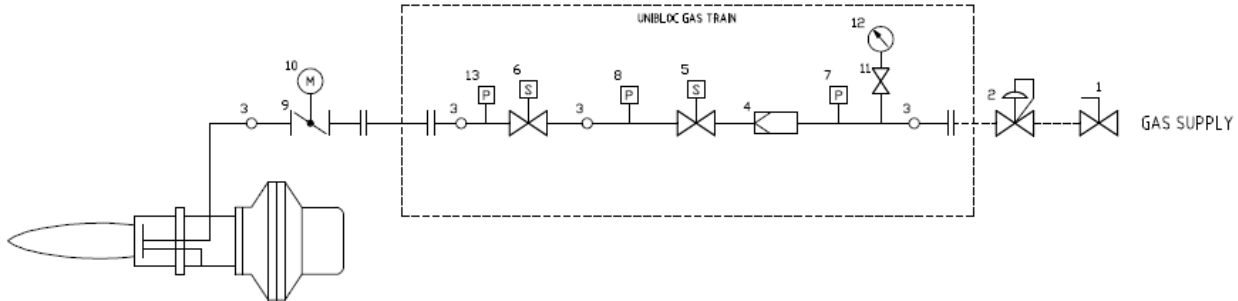
PROJECTION 3rd ANGLE

BURNER RATING GRAPH



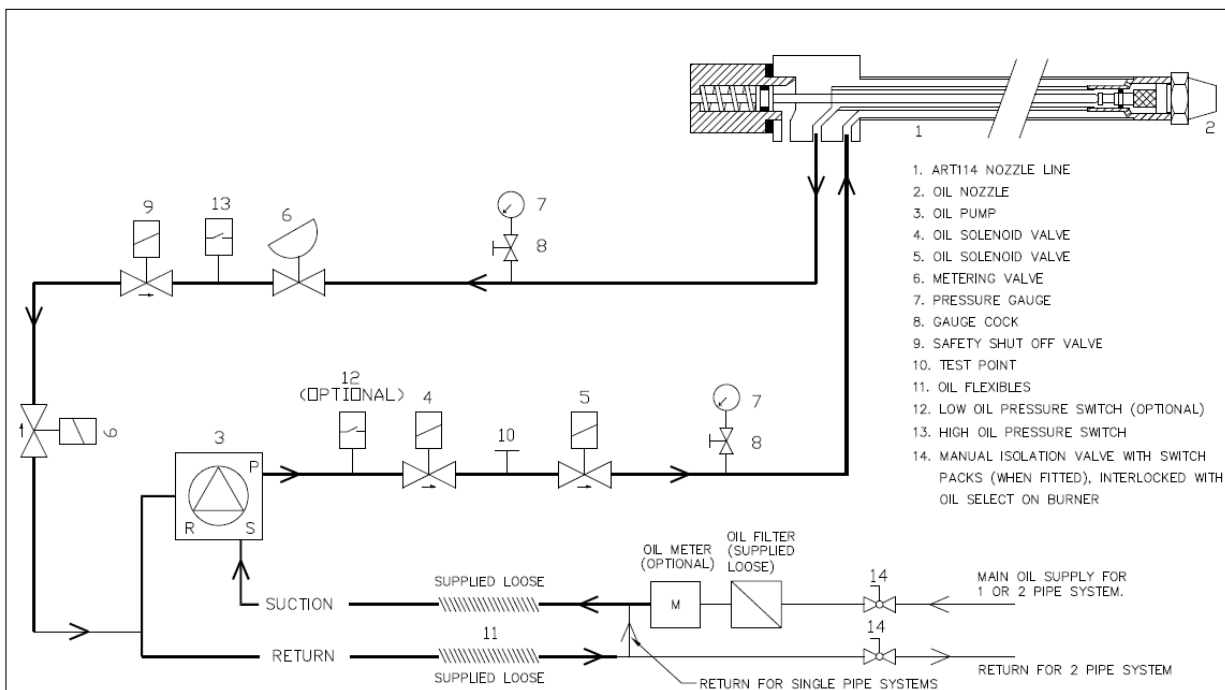
BURNER SCHEMATICS

TYPICAL GAS LINE SCHEMATIC FOR MODULATING BURNERS

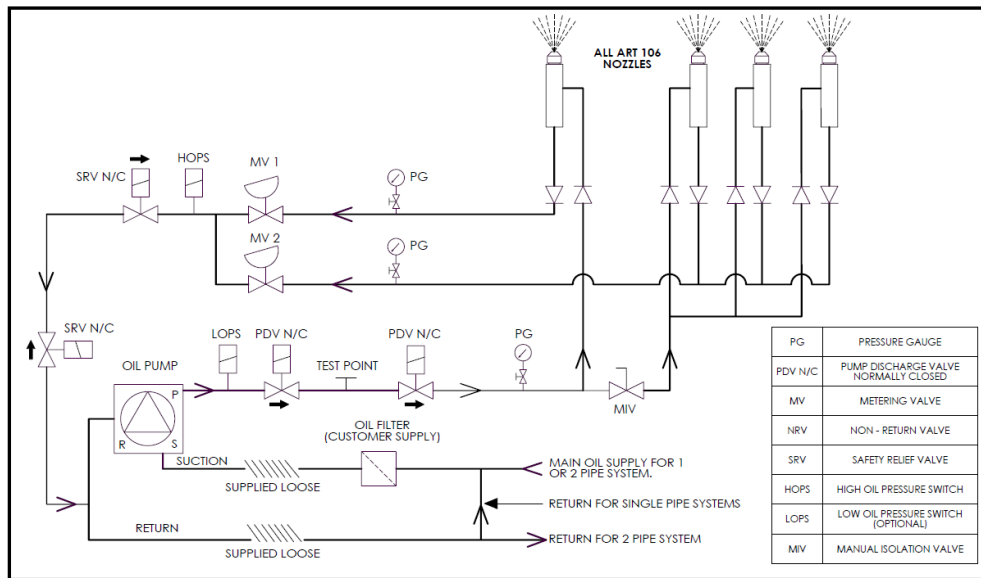


ITEM	LOCATION	DESCRIPTION
1	EXTERNAL	MANUAL GAS ISOLATION VALVE
2	EXTERNAL	MAIN GOVERNOR
3		TEST POINT
4	UNIBLOC	INTEGRAL FILTER
5	UNIBLOC	FIRST MAIN VALVE (VKD)
6	UNIBLOC	SECOND MAIN VALVE (VKD)
7	UNIBLOC	LOW GAS PRESSURE SWITCH
8	UNIBLOC	VALVE PROVING PRESSURE SWITCH
9	BURNER	BUTTERFLY VALVE
10	BURNER	RATITRONIC 6026 SERVO MOTOR
11	UNIBLOC	TEST COCK (OPTIONAL)
12	UNIBLOC	PRESSURE GAUGE (OPTIONAL)
13	UNIBLOC	HIGH GAS PRESSURE SWITCH
14		
15		
16		

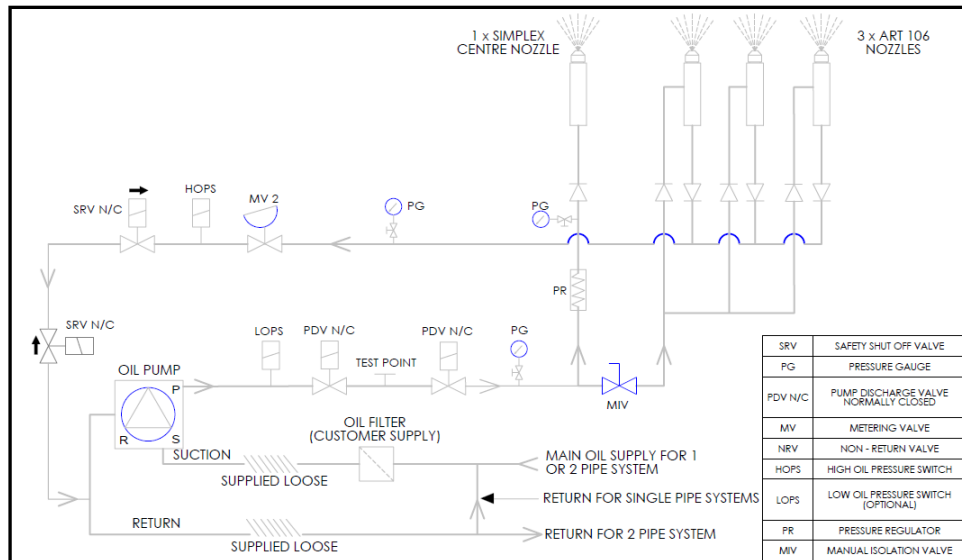
TYPICAL OIL LINE SCHEMATIC FOR LIGHT OIL DUAL FUEL BURNERS MODULATING WITH ART 1400 NOZZLE



TYPICAL SCHEMATIC FOR MULTI NOZZLE SYSTEM BURNER (WITH SRV & LOPS & HOPS)



TYPICAL SCHEMATIC FOR MULTI NOZZLE SYSTEM BURNER FIXED CENTRAL NOZZLE



STANDARD SPECIFICATION DATA

BURNER TYPE	Firing Rate kW		GAS VOLUME (m ³ /HR) *(1)		FIRING MODE		Fan Motor kW	Pump Motor kW	Voltage	Hz	Ph	Running Current	Starting Current *4
	MIN*3	MAX	MIN*3	MAX	Electronic Modulation *(2)	Electronic Modulation with VSD							
TD5.800 Z	800	8000	76.9	769	✓	✓	20.5	3.0	380-420	50	3	51 Amp	107 Amp
TD5.1000 Y	980	9800	94.2	942	✓	✓	24.0	3.0	380-420	50	3	61 Amp	136 Amp

*1 – Based on Nat. Gas C.V 10.4 kW/m³

*2 - Fitted with a Ratiotronic 6000 system

*3 – Based on 10:1 turn down fitted with VSD when firing on Natural Gas

*4 - When fitted with VSD the starting current is 0 Amps

COMBUSTION HEAD

The Dunphy dual fuel combustion head incorporates a two-stage fuel/air mixing system which eliminates low frequency resonance and allows maximum combustion efficiency with minimum emission levels.

This system combined with smooth ignition and extreme reliability make Dunphy combustion equipment the most sensible choice for all heating and process applications.

ULTRA LOW NO_x BURNERS

All Dunphy T-Series burners are fitted with low NO_x combustion heads as standard equipment.

As an optional extra all burners in this range can be fitted with a flue gas recirculation system to achieve ultra low NO_x emissions.

Dunphy Combustion Ltd have a policy of continuous development and reserve the right to change prices and specifications without prior notice.

Dunphy Combustion Ltd. has a policy of continuous development and reserve the right to change prices and specifications without prior notice